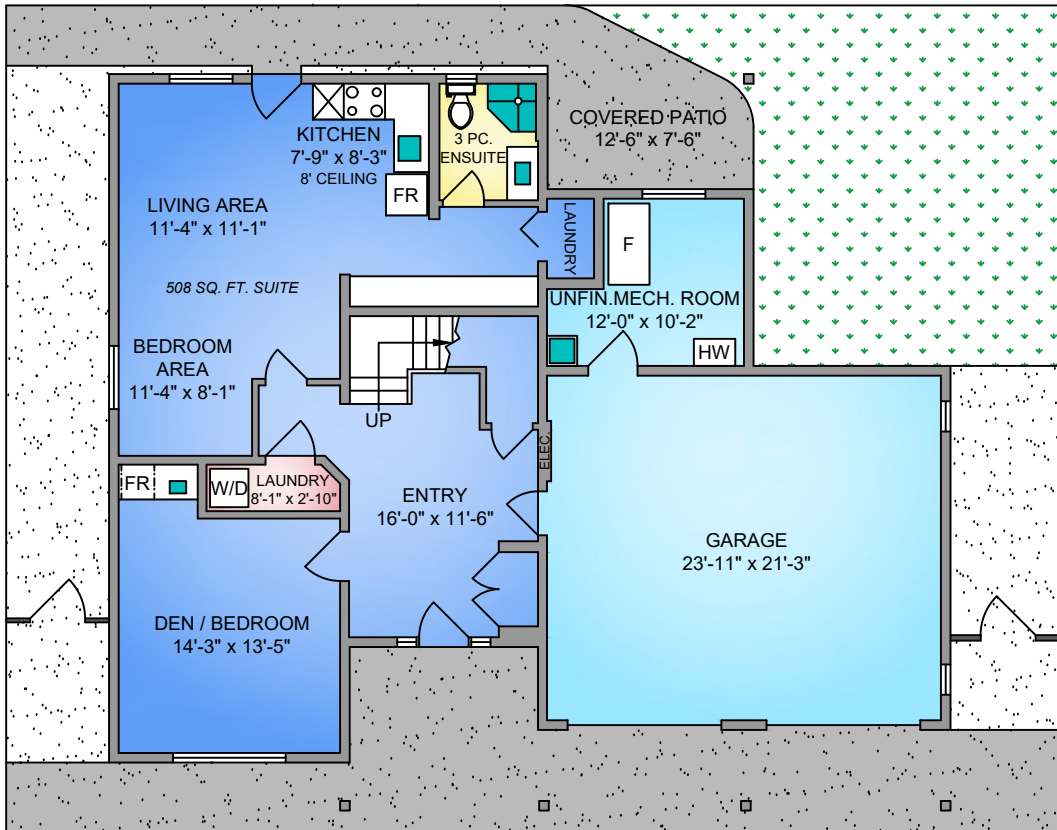


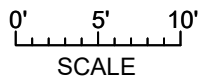
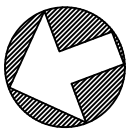
FIRST FLOOR
1048 SQ. FT.
9' CEILING HEIGHT



SECOND FLOOR
1614 SQ. FT.
9' CEILING HEIGHT



NORTH



3578 GOLDSBUR ROAD				
FEBRUARY 1, 2019				
PREPARED FOR THE EXCLUSIVE USE OF MARK SALTER				
PLANS MAY NOT BE 100% ACCURATE, IF CRITICAL BUYER TO VERIFY.				
FLOOR	AREA (SQ. FT.)			
	FINISHED	UNFINISHED	GARAGE	DECK / PATIO
FIRST	1048	114	544	110
SECOND	1614	-	-	233
TOTAL	2662	114	544	343